



girl scouts
of suffolk county

2025 Making an Impact Breakfast

◆ *Digital Journal* ◆

Igniting Tomorrow's
Changemakers

Friday, March 7th, 2025

Stonebridge Country Club,
Smithtown, NY





girl scouts of suffolk county

At Girl Scouts of Suffolk County, our mission is to build girls of courage, confidence, and character who make the world a better place.

The Girl Scout Leadership Experience is centered on four pillars-STEM, Outdoors, Life Skills, and Entrepreneurship, and is designed to build confidence in every girl, regardless of background or ability. Guided by supportive adults and peers, girls develop their leadership potential through age-appropriate activities that enable them to discover the world around them.

Today's Girl Scouts are tomorrow's world changers, and at Girl Scouts of Suffolk County, we are committed to helping every girl build a foundation for success.



Girl Scout Promise

On my honor, I will try:
To serve God* and my country,
To help people at all times,
And to live by the Girl Scout Law.

Girl Scout Law

I will do my best to be
honest and fair,
friendly and helpful,
considerate and caring,
courageous and strong,
and responsible for what I say and do,
and to respect myself and others,
respect authority,
use resources wisely,
make the world a better place,
and be a sister to every Girl Scout.

**Members may substitute for the word
God in accordance with their
own spiritual beliefs.*

CHANGE THE WORLD, INVEST IN GIRL SCOUTS

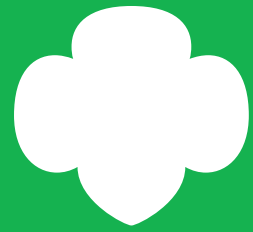
When Girl Scouts are in charge, you can be sure they will change the world for the better. Support Girl Scouts of Suffolk County and be a part of that change by investing in our council initiatives or joining us at an upcoming fundraising event.

Visit www.gssc.us/donate or scan our QR code



Follow us on social media



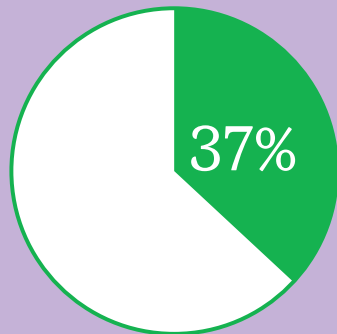


Girl Scout Alum Facts*

The Girl Scout alum community is over 50 million strong.

Based on current U.S. government population estimates, there are approximately 143 million adult women in the United States.

More than 1 in 3 women in the United States were Girl Scouts at some point in their lives.



79%
say they stand up for their beliefs and values

Compared to other women, Girl Scout alums embody higher levels of:

- **Courage**—they show resilience when learning from failure and setbacks, take on challenges, are ambitious, and aren't afraid to take risks (46% compared to 36%).
- **Confidence**—they accomplish what they set out to do and are assured in their abilities (66% compared to 53%).
- **Character**—they lead purposeful and meaningful lives, are honest and trustworthy, stand up for their beliefs and values, and actively contribute to others' well-being (74% compared to 62% showed positive values and 61% compared to 48% showed positive self-image).

*Girl Scout Alum Facts, GSRI, 2021

Dear Friends,

Each year, in honor of International Women's Day, our Making an Impact Breakfast brings together a dynamic panel of women to share stories of empowerment and strength as they inspire us all.

At Girl Scouts of Suffolk County, our mission to build girls of courage, confidence, and character who make the world a better place is a part of everything we do.

We celebrate our 5th Annual Making an Impact Breakfast with a renewed commitment to ensuring every Girl Scout, regardless of background or ability, has a safe space to lead, thrive, and be unapologetically themselves.



The Girl Scout Leadership Experience centers on four pillars: STEM, Outdoors, Life Skills, and Entrepreneurship. Your support allows us to provide unique and memorable experiences that build confidence and help level the playing field in our ever-changing world. Your engagement and generosity allow Girl Scouts to rise to new challenges by giving them the resources they need to realize their dreams.

Our 2025 Making an Impact Panelists, Linda Armyn, Dr. Sylvia Diaz, Gina Farese, and Michelle Martin, along with our moderators and co-chairs of the event committee, Jennifer Friedman and Krupa Panchal-Lauricella, share in our vision for the future of girls. Today's Girl Scouts are the changemakers of tomorrow, and with you in their corner, they can do anything.

Thank you for making an impact.

Warmly,



Tammy Severino
President & CEO



Donna Smeland
Chair of the Board

Make a Bigger Impact For Girls!

Your support doesn't have to stop here—
let's create even more opportunities for the
next generation of leaders!

Corporate Opportunities

Does your company offer internships, mentorships, or programs that empower young women? Partner with the Girl Scouts to provide transformative experiences that inspire future success.

Additional Donations

Every dollar helps us deliver programs that build courage, confidence, and character in girls across Suffolk County.



Scan the QR code to let us know
how you'd like to get involved!

Together, we can shape brighter futures for our Girl Scouts.
Thank you for your continued commitment to making a difference!

Questions? Email Angela Perrone, Fund Development Manager,
at aperrone@gssc.us or (631) 543-6622 x245

Special Guests

Our Panelists



Linda Armyn
*President & CEO,
FourLeaf Federal Credit Union*



Dr. Sylvia A. Diaz
*Deputy County Executive for Health,
Human Services, & Education*



Gina Farese
*CEO, Marcor Construction, Marcor Solar,
& MGM Construction Services*



Michelle Martin
*Director of Mission and Ministry,
Molloy University*

Our Moderators



Jennifer Friedman
*Executive Director of Sisters of St. Dominic
of Amityville & 2nd Vice Chair of
GSSC's Board of Director*



Krupa Panchal-Lauricella
*Office of Islip Town Councilman
James P. O'Connor & 1st Vice Chair of
GSSC's Board of Directors*

How Girl Scouts Can Support Mental Health*



“Because of Girl Scouts, I’ve had a community and a safe place to be myself.”

2/3rds of girls feel like being in Girl Scouts supports their mental health.



Girls say Girl Scouts provides...

- ✓ A safe space
- ✓ A program that teaches leadership, courage, confidence, & character
- ✓ Social support & friendships
- ✓ Supportive adult relationships
- ✓ Consistency & comfort in a time of change



“Girl Scouts has taught me to be self-confident, which is very good for my mental health. I have learned to be brave when trying new things, which reduces anxiety I might have had when put in new or uncomfortable situations. I have learned to be adaptable. Girl Scouts’ encouragement of always trying new things has led me to pursue activities that make me happy.”

*Girl Speak Out About Mental Health, GSRI, 2020

Board of Directors

Donna Smeland
Chair of the Board

Krupa Lauricella
1st Vice Chair

Jennifer Friedman
2nd Vice Chair

Brandy Scott
3rd Vice Chair

Lauren Agunzo
Treasurer

Antoinette O’Keefe
Secretary

Tammy Severino
President & CEO

Hon. Valerie M. Cartright

Christina DiBernardo

Rev. Tisha Dixon Williams

Steve Harper

Erika Karp

Dawn Lott

Sarah McCandless

Michael Starrantino

Felicia Thomas-Williams

Rob Tockarszewsky

John Udaze

Justin Volence



Thank You!



We want to express our heartfelt gratitude to our sponsors for their generous donations and unwavering support of the Girl Scouts of Suffolk County. Your contributions are essential in ensuring that girls from all backgrounds have the opportunity to pursue their dreams.

Together, we are empowering the changemakers of tomorrow. Thank you for being a vital part of our mission to build girls of courage, confidence, and character, who make the world a better place.

—The Committee

Join, Volunteer, Reconnect or Donate at www.gssc.us

442 Moreland Road, Commack NY, 11725 • (631) 543-6622

Breakfast Committee

Jennifer Friedman

Co-Chair, Executive Director, Sisters of St. Dominic of Amityville

Krupa Lauricella

Co-Chair, Chief of Staff, Office of Councilman James P. O'Connor

Danielle Scott Belli

VP of Business Development, Point VOIP

Esma Deljanin

Chief Operating Officer, Hirschen Singer & Epstein LLP

Suzanne Ferro

Fund Development Associate of GSSC

Adrienne Greene

Market Manager, Vice President, Valley Bank

Tami Mitchell

DE/VA underwriter, Contour Mortgage

Danielle Moloney-Hassett

Vice President, Moloney Funeral Homes

Angela Perrone

Fund Development Manager of GSSC

Donna Smeland

Chair of the Board of GSSC

Tammy Severino

President & CEO of GSSC



Making An Impact Breakfast Sponsors & Supporters

Courage, Confidence, & Character Sponsor



Making an Impact Sponsor



Making an Impact Sponsor



Making an Impact Sponsor



Making an Impact Sponsor



Making an Impact Sponsor



Making an Impact Sponsor



Making an Impact Sponsor



Making an Impact Sponsor



Making an Impact Sponsor



“Girl Scouts is more than a program and an organization. I've never been in a group of people that I felt so welcomed, supported, and want to see me succeed. I've found a home in Girl Scouts of Suffolk County.”

Olivia P., Girl Scout Ambassador



\$1,000

provides scholarships to TWENTY girls in our in-school Girl Scout program at one of our smaller community school districts.

Donate Today at gssc.us/impact or scan the QR code

Making An Impact Breakfast Sponsors & Supporters

Taking The Lead Sponsors



Long Island Chapter



“Girl Scouts has made me a leader. I've been a leader in many different situations and this has taken a big role in my life.”

Addision I., Girl Scout Cadette



\$250

provides ONE girl with a Girl Scout membership for one year, a uniform, patches, & programming.

Donate Today at gssc.us/impact or scan the QR code

Making An Impact Breakfast Sponsors & Supporters

Charitable Supporters

Advanced Air Conditioning, Heating and Refrigeration, Inc.

Alzheimer's Disease Resource Center

American Foundation for Suicide Prevention Long Island Chapter

Assemblyman Keith Brown, Assemblyman Steve Stern, and Senator Mario Mattera

Central Nassau Guidance & Counseling Services

Contour Mortgage

First Student, Inc.

GSSC's Board of Directors

Hall Lane Moving & Storage

Hirschen Singer & Epstein

Hope For Youth

JM2 Architecture

MARCOR Construction

Peter Lombardo Electric

PointVOIP

Sisters of St. Dominic of Amityville

Techworks Consulting

Touchstone Environment Geology, PC

***“We are not just girls selling
Girl Scout cookies...we're girls
changing the world!”***

Angelina T., Girl Scout Cadette



\$50

***provides ONE girl with a Girl Scout
membership for one year.***

***Donate Today at gssc.us/impact
or scan the QR code***

Raffle Donors

Alpengirl Adventure Camp
Bark Box
Bath & Body Works
Bob's Discount Furniture
Campbell's Bakery
Coach Meeting House/Cooper Bluff/
The Sunset Club
Concord Cleaners
Elite Island Resorts
Estelle's Dressy Dresses
Hammer & Stain Long Island
Jake's 58 Casino Hotel
John W. Engeman Theatre at Northport
Karp's Fine Wines & Liquors
Liberty Coca-Cola Beverages
Old Westbury Gardens
New York Yankees
Oriental Trading Co.
Pets Supplies Plus Central Islip
Prestige Performing Arts
Tammy Severino
T.O.A. Asian Fusion
Tap Room
Target
Ticket Bash
Tilles Center for the Performing Arts

Thank You To Our Venue Hosts

LESSING'S
est. 1890

Stonebridge
GOLF LINKS & COUNTRY CLUB

Girl Scout Community Programs

So far, we have brought the Girl Scout Experience to over 2,800 girls across diverse communities, with over 50 programs, in over 40 schools and 7 family shelters.



We want the Girl Scout experience for all girls. Because all girls, despite background or ability, deserve educational and enriching opportunities that help them discover their strengths and passions.

*Compared to non-Girl Scouts, Girl Scouts are more likely to...

- **Develop a Strong Sense of Self:** *They have confidence in themselves and their abilities, and are happy with who they are as a person.*
- **Form Healthy Relationships:** *They develop and maintain healthy relationships by communicating their feelings directly and resolving conflicts constructively.*
- **Display Postive Values:** *They act ethically, honestly, and responsibly, and show concern for others.*
- **Be Community Problem-Solvers:** *They desire to contribute to the world in purposeful and meaningful ways, learn how to identify problems in the community, and create "action plans" to solve them.*
- **Seek Challenges:** *They take appropriate risks, try things even if they might fail, and learn from mistakes.*

*The Girl Scout Impact Study, GSRI, 2017

Making a Difference

As we add more programs and schools to the upcoming year with up to 90% of these Girl Scouts in need of scholarships, it's more important than ever to ensure we can give them access and help them become the next generation of leaders.

Join our team of strategic partners who enhance our Community Programs by adding other special workshops on financial literacy and budgeting, STEM activities, and special guest speakers.



For more information, contact customercare@gssc.us or call (631) 543-6622

Community Programs

Bringing the Girl Scout Experience to Every Girl!

- | | |
|---|--|
| Academy Charter Elementary School K-6 | Marion G. Vedder Elementary School |
| Andrew T. Morrow Elementary School | Martin L. King Jr. Elementary School |
| Anthony Alfano Elementary School | North Elementary School |
| Aquebogue Elementary School | North Middle School |
| Bay Shore Middle School | Northeast Elementary School |
| Belmont Elementary School | Northwest Elementary School |
| Charles E. Walters Elementary School K-1 | Oak Park Elementary School |
| Charles E. Walters Elementary School 2-4 | Park Avenue Memorial Elementary School |
| Community Housing Innovations Medford | Parkview Elementary School |
| Community Housing Innovations Moreland | Parliament Place Elementary School |
| Community Housing Innovations Smithtown | Pine Park Elementary School |
| Coram Elementary School K-1 | Pronto of Long Island – Non-Profit Community Outreach Center and Food Pantry |
| Coram Elementary School 2-4 | Pulaski Street Elementary School |
| Cordello Avenue Elementary School | Rhyan's Center of Hope, Bay Shore |
| Cutchogue East Elementary School | Rhyan's Center of Hope, Brentwood |
| Edmund W. Miles Middle School | Ridge Elementary School K-1 |
| Edward Bosti Elementary School | Ridge Elementary School 2-4 |
| Family Service League Brentwood | Riley Avenue Elementary School |
| Family Service League, Riverhead | RJO Intermediate School |
| Fifth Avenue Elementary | Roanoke Avenue Elementary School |
| Fort Salonga Elementary School | Southwest Elementary School |
| Frank J. Cannon Southeast Elementary School | Stimson Middle School |
| Gardiner Manor Elementary School | West Middle Island Elementary School K-1 |
| Hemlock Park Elementary School | West Middle Island Elementary School 2-4 |
| Huntington Tri-CYA | West Middle School |
| LaFrancis Hardiman Elementary School | William E. DeLuca Elementary School |
| Laurel Park Elementary School | William Floyd Elementary School |
| Loretta Park Elementary School | Woods Road Elementary School |
| Marguerite Mulvey Elementary School | |

“Girl Scouts allows me to work with people for change. And this can be something as small as picking up trash at the beach, working with people at a senior center, or basically just anything to help out my community.”

Joannie T., Girl Scout Senior



\$500

provides ONE girl with 1 week of Summer Camp at Camp Edey, exclusively for girls to explore the great outdoors and make friends.

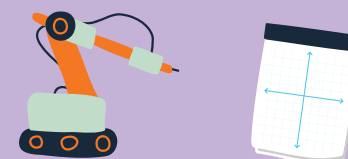
Donate Today at gssc.us/impact or scan the QR code

What do Girl Scouts think about the STEM program?*

Two-thirds of Girl Scouts (67%) are doing STEM programs—and the majority are doing multiple activities.

95%

of girls who did Girl Scout STEM activities thought they were fun



91%



tried activities they have never done before

88% want to do more STEM activities



“I liked Backyard Science Night with the telescopes because seeing the moon through the telescope was cool.” (Daisy)

“Observing the chemical reactions in candy making was very hands-on and left me with a good taste in my mouth.” (Ambassador)

*The Impact of Girl Scout STEM Programming, GSRI, 2022

***“As Juliette Gordon Low once said,
“Right is right, even if no one else is doing it.”
Whether it be, advocating for people with
disabilities, for animal rights, or even
something small at school, I have the power to
make change.”***

Camdyn G., Girl Scout Ambassador



girl scouts 
of suffolk county



Camp Connect: **The Ultimate Team-Building Retreat**



Reignite, Reconnect, and Recharge with Your Team

Escape the office and rediscover the power of teamwork in the heart of nature at Camp Edey. Nestled on 95 wooded acres in Bayport, NY, Camp Connect offers your team exclusive access to this serene oasis for a full day of unforgettable bonding and growth.

Why Choose Camp Connect?

- Customized Team-Building: We offer additional creative activities including arts & crafts and/or adventure-style problem-solving games to suit your team's goals and dynamics.
- Natural Inspiration: Step away from screens and into a rejuvenating natural environment.
- Lasting Impact: Strengthen bonds and leave with renewed energy and collaboration.

Ready to Transform Your Team?

Reserve your day at Camp Connect today! Availability is limited. Monday-Friday dates available, April through May or September through November.

Your investment of \$5,000 includes up to 50 participants *(Add on people for an additional cost.)*

- The entire camp is yours from 8 hours (8:00 am - 4:00 pm)
- Begin the day with a hearty breakfast and refuel with a bagged lunch.
- Pedalboat your way to collaboration on the San Souci Lake
- Aim high and achieve together with a fun, guided archery experience.
- Start the day with a refreshing yoga session dockside.
- Explore the great outdoors on our peaceful, hiking trails.
- Unleash creativity and strengthen connections with arts & crafts.
- Build trust, foster communication, and boost morale with team-building games.



\$100

provides ONE girl with a Girl Scout membership for one year and a uniform.

Donate Today at gssc.us/impact or scan the QR code

Contact Angela at aperrone@gssc.us or 631-543-6622 x245 to book your day today!



Your **Promise** is the connection to a sisterhood 50 million strong.

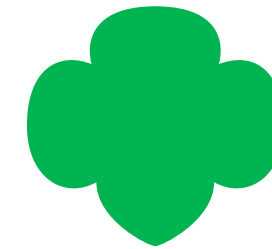


Join the GSSC Alum Association Today!



Questions? Contact Angela at aperrone@gssc.us or call (631) 543-6622 ext.245

PLATINUM



You've Made An Impact For Girl Scouts of Suffolk County!

Because of you, girls can find the courage, confidence and character to change the world.

Thank you to our wonderful panelists, amazing moderators, media Girl Scouts, and to all our donors for being a part of our Making an Impact Breakfast. We hope you'll join us next year!



Donna Smeland
*Chair of the Board,
Girl Scouts of Suffolk County*

Join, Volunteer, Reconnect or Donate at www.gssc.us

Hirschen Singer & Epstein LLP
is proud to support

Girl Scouts of Suffolk County

**HIRSCHEN SINGER
& EPSTEIN LLP**

257 Park Avenue South
New York, New York 10010

hseny.com

ROCKLINE®

WEALTH MANAGEMENT



SERVICES WE OFFER

- Internal Portfolio Review
- Estate Planning Review
- Social Security Analysis
- Education Planning
- Tax Planning
- Cash Flow and Budgeting
- Portfolio Rebalancing
- Risk Management Planning
- Philanthropic Strategy

(516) 605-1624

Rockline Wealth Management
2701 Sunrise Highway
Islip Terrace, NY 11752

Disclaimer: Rockline Wealth Management, LLC (RWM, LLC) is a registered investment adviser located in Islip Terrace, NY. RWM, LLC is registered with the U.S. Securities and Exchange Commission. Registration of an investment adviser does not imply any specific level of skill or training and does not constitute an endorsement of the firm by the Commission.

OUR ADVISORS

Gabriel M. Gallante
Owner, CEO & CCO

Mark Rose
Executive Vice President

Anthony Santo
Vice President - Wealth
Management

girl scouts
of suffolk county



Golf Classic

SAVE THE DATE

Monday, September 29, 2025

Nissequogue Golf Club, St. James



Mark your calendars for a day of golf and philanthropy supporting the Girl Scout movement to empower young girls in Suffolk County.

Enjoy a round of golf on a beautiful course and participate in an evening of awards, raffles, and more. Your continued support makes a significant difference in the lives of these girls, helping them gain essential skills and confidence. Together, we can inspire the next generation of changemakers!

Contact Angela at aperrone@gssc.us for more info.



Proudly Supports

Girl Scouts of Suffolk County's 2025 Making an Impact Breakfast and helping to build girls of courage, confidence, and character who make the world a better place.



As the leading school transportation solutions provider in North America, First Student strives to provide the best start and finish to every school day. First Student completes five million student journeys each day, moving more passengers than all U.S. airlines combined. With a team of highly-trained drivers and the industry's strongest safety record, First Student delivers reliable, quality services including full-service transportation and management, special-needs transportation, route optimization and scheduling, and charter services for 1,100 school district contracts.

Contact us! (516) 433-7600 firststudentinc.com





Proudly Supports

*Girl Scouts of Suffolk County's 2025
Making an Impact Breakfast and helping to build
girls of courage, confidence, and character who
make the world a better place.*



Advanced Air Conditioning & Heating is a family-owned company serving Long Island for 39 years, maintaining an A+ rating from the Better Business Bureau for 22 years. They provide high-quality service for all heating and cooling systems, with well-trained technicians and friendly customer service. Whether for maintenance, installation, or replacement, Advanced is ready to assist.

Contact us!  (631) 231-6767  advancedairheat.com



*Assemblyman Keith Brown
Assemblyman Steve Stern
Senator Mario Mattera
honor and recognize the
Girl Scouts of Suffolk County
on the occasion of the
“Making an Impact Breakfast”
International Women’s Day*



Over the past few years, lifetime members have helped provide more than 30,000 memberships to Girl Scouts across the country whose families would otherwise not have been able to afford it.



Support Girl Scouts for years to come by joining as a lifetime member. Your one-time membership fee ensures ALL Girl Scouts can unapologetically be themselves. Plus, you'll be signing up for a lifetime of watching them discover their strengths and rise to meet new challenges.

When you join as a lifetime member, \$25 of your membership fee will fund a year of Girl Scouting for a member in your local community.

Any individual who accepts the principles and beliefs of the Girl Scout Movement and is at least 18 years old can purchase a lifetime membership.

A Girl Scout lifetime membership is a one-time purchase and costs \$400. Alums under 30 or volunteers with ten or more years of service can purchase a lifetime membership for \$200. Your lifetime membership donation is tax-deductible as allowed by law.



Ready to join? Become a lifetime member at www.gssc.us/lifetime or scan our QR code



girl scouts 
of suffolk county

Questions? Contact customercare@gssc.us

BRONZE



In the Girl Scout Law it states,
“Be a Sister to Every Girl Scout.”

As Dominican nuns, we know a thing or two about being a “sister”.
A sister is someone who chooses to make an impact in the world through education, service, community and faith -- because it's the right thing to do!

We know we share these values with all those involved in Girl Scouts Suffolk County (GSSC), including **Jennifer Friedman**, member of the GSSC Board of Directors and Executive Director of our Motherhouse Complex, as well as panelist **Michelle Martin**, who is also an associate member of our congregation.

We are proud of both of these women and are honored to support GSSC in empowering young women to be the changemakers of tomorrow.



www.sistersofstdominic.org

Engrave Your Legacy



Walk of Memories & Milestones at Camp Edey

Imagine your name, troop, or a special message forever engraved on our beautiful boardwalk at Camp Edey—a place where friendships bloom, nature inspires, and lifelong memories are made. Whether you're honoring a loved one, celebrating a milestone, or simply sharing your love for camp, this unique opportunity lets you become part of its story.

Each boardwalk plank is handmade right here at Camp Edey, ensuring that every detail reflects the love and connection this special place inspires. Your custom engraving is created with precision and care, making your board a true part of Camp Edey's story. Planks will be prominently placed in one of three iconic locations at Camp Edey. Choose from one of the following locations to engrave your name, troop, or message:

1. **Main Entrance to Campgrounds**

This is the path every camper walks on as they embark on their summer camp adventures.

- 5 foot-long planks available at \$350 each.

2. **Mae K Lodge to Juliette Low Friendship Center**

A vital connection leading to the heart of camp life, where friendships and memories are made.

- 5 foot-long planks available at \$350 each.

3. **Fishing Dock (San Souci Lake)**

A scenic spot where campers cast their lines and enjoy peaceful moments by the water.

- 7 foot-long planks available at \$500 each.
- 5 foot long planks available at \$350 each.



Your Contribution Matters

Not only will your engraved plank symbolize your connection to Camp Edey, but it will also help support the upkeep of the boardwalks and improve the camp experience for future generations. Each plank will be maintained to ensure its message lasts for years to come. This is open to all—families, alumni, troops, and anyone who holds Camp Edey and Girl Scouts of Suffolk County close to their heart.



Reserve Your Plank TODAY—www.gssc.us/engrave

Questions? Contact Amy Keyes, *Director of Operations* at akeyes@gssc.us or call (631) 543-6622 x222

Join, volunteer, reconnect, or donate, by visiting www.gssc.us
Girl Scouts of Suffolk County is a 501c3 not-for-profit organization. Tax ID: 11-2164434



SUMMER CAMP 2025

Experience the magic of nature! Make memories with friends (new & old), build confidence, and gain new skills with our amazing camp team. We have something for everyone—Sign up TODAY and save BIG!

- For Girls Rising to Grades 1st-9th in the Fall
- 9 Weekly Sessions: June 30 - August 29 (Week 1 is 4 days.)
- Hours: 9:00 AM to 4:30 PM
(**Extended Care** available for \$75 per week; 8-9 AM / 4:30-6 PM.)
- Camp Edey in Bayport, NY



DAY CAMP

1st-6th Grade

Weekly themes, Gaga Ball, Boating, Games/Sports, Arts, Swimming, & more!

\$425

per camper, per week.

TEEN-VENTURES

7th-9th Grade

Weekly themes, Off-Site Trip, Gaga Ball, Boating, Archery, Arts, Swimming, & more!

\$575

per camper, per week.

SLEEPAWAY

5th-6th Grade

Day camp, exclusive evening activities, and room & board.

\$630

per camper, per week.

7th-9th Grade

Teen-ventures, exclusive evening activities, and room & board.

\$700

per camper, per week.

Register Online @ www.gssc.us/summercamp

Questions? Email camp@gssc.us or call (631) 543-6622

Camper's get a FREE t-shirt, lunch/snacks, & \$10 at Trading Post each week. No bus transport this year.



